

9315 TRIPLE SHOWER VALVE

carter

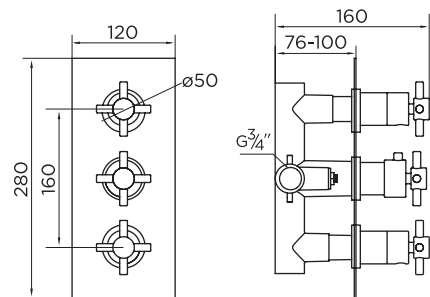
PRODUCT SPECIFICATION

Product Code:	9315
Finish:	Chrome
Product Type:	Concealed Shower
Cartridge Type:	Thermostatic cartridge and ceramic flow cartridge
Inlet Connections:	3/4 BSP
Outlet Connections:	3/4" BSP
Fitting Dimensions:	120mm
Construction:	Body: Brass Handles: Brass Plates: SS
Gross Weight (kg):	3.50



ADDITIONAL INFORMATION

- Chromed concealing plate
- Triple Control – flow and temperature are controlled separately giving accurate control of both.
- Thermostatic cartridge maintains showering temperature to +/- 1c giving a stable outlet temperature.
- Ceramic disc flow control cartridge
- Automatic shut-off in the event of cold water supply failure, to prevent scalding.
- Temperature factory set to a 38c to eliminate the ability to select an unsafe temperature without overriding.
- Two outlets
- Modern cross handles
- Lifetime guarantee



FLOW RATES (litres per minute)

0.5 Bar	1 Bar	3 Bar
7.9	12.5	19.8

WORKING PRESSURES (bar)

Min Pressure	Max Pressure	Best Performance
0.5	6	3

niagara