

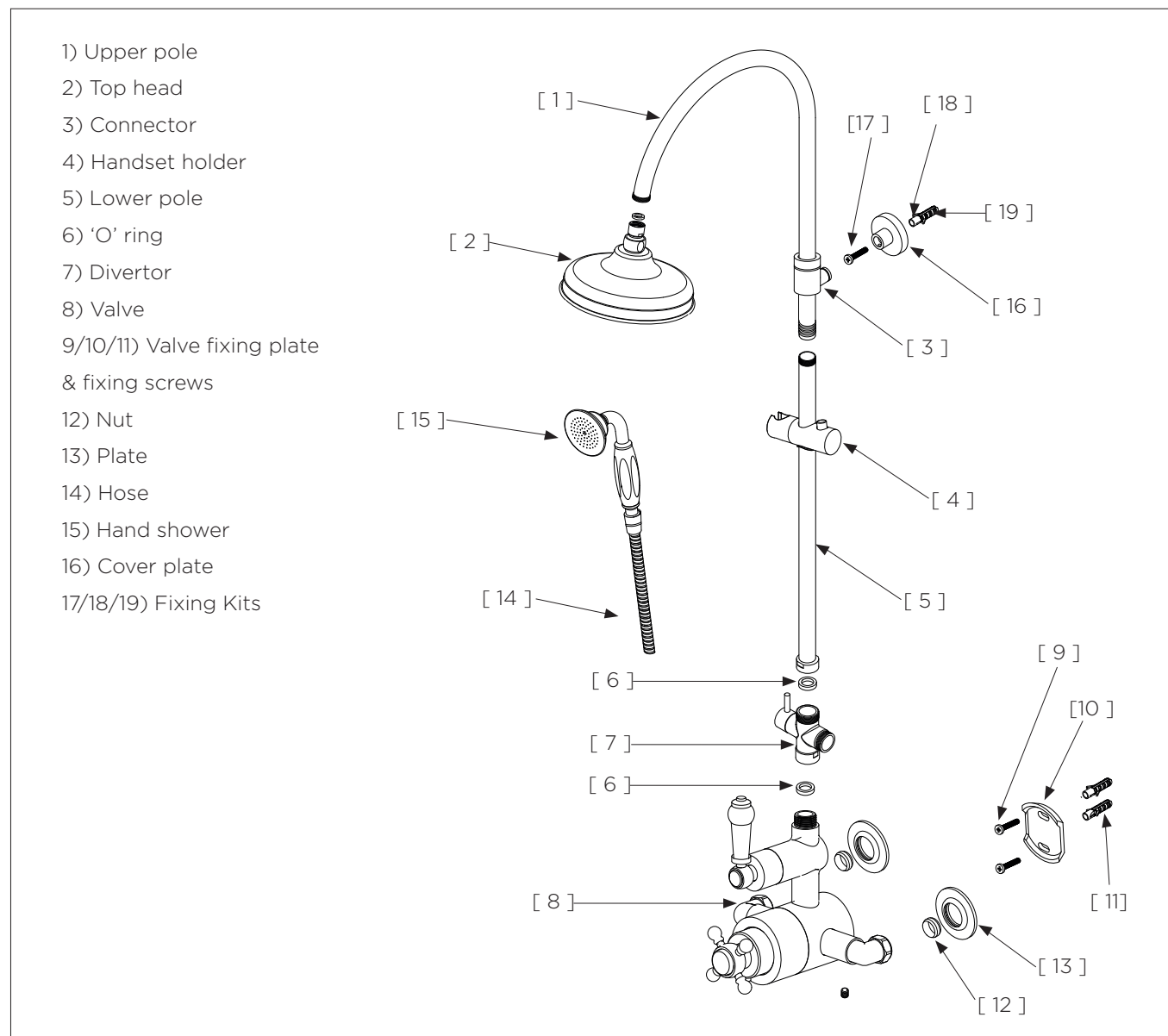
# Traditional Shower Set Instruction

## IMPORTANT

Please read these instructions carefully and keep in a safe place for future reference. If you are unsure of any part of the instructions in this document then we recommend that you contact a reputable qualified trades person.

## INTRODUCTION

The Model supplied may vary from the image shown below. Please note that the general installation process for all standard Shower Sets are the same and the following guide will take you through the process.



## BEFORE INSTALLATION

- 1) **Warning:** Before installing the new shower valve it is essential that you thoroughly flush through the pipework in order to remove any remaining swarf, solder, etc. Failure to carry out this procedure could cause problems or damage to the workings of the shower valve.
- 2) Turn off the mains water supply before commencing work.
- 3) Before installation identify all components and inspect the product for any damage. A claim will not be accepted if an obvious defect is found after installation.

C20 V2



BY CAVALIER BATHROOMS

# Traditional Shower Set Instruction

## INSTALLATION

- 1) Put the handset holder [ 4 ] onto the lower pole [ 5 ]
- 2) Connect the upper pole [ 1 ] and the lower pole [ 5 ] making sure that the end of pole [ 1 ] goes through the 'O' rings inside the connector [ 3 ] for seal
- 3) Mark out the position on the wall
- 4) Prepare the pipework and fit the valve fixing plate [ 10 ] on the wall
- 5) Connect the diverter [ 7 ] to the valve and attach riser pole to the diverter [ 7 ]
- 6) Fix the valve and connect the inlets, making sure the hot connection is to the left and the cold to the right
- 7) Valve **MUST** be open when turning the mains water back on to ensure no debris is caught in the cartridges. Finally, check connections for watertightness.

## Guarantee

For full details of our guarantee please refer to our website. Our products are backed by a 10 year guarantee, this is only valid to customers who complete and submit the online Niagara® Guarantee Registration Form within 30 days of installation. Please note that products with finishes other than Chrome are guaranteed for 2 years only, these products must also be registered online to activate the 2 Year Guarantee. To register and activate your guarantee please visit [www.niagarabathrooms.co.uk](http://www.niagarabathrooms.co.uk)

### Aftercare

Care **MUST** be taken when cleaning our products to avoid damaging the fitting or finish. To maintain the appearance of the fitting, please ensure it is cleaned regularly using only a clean soft damp cloth. Whilst all of our products are durable the finishes are vulnerable to some strong substances, we only recommend the use of warm soapy water, **DO NOT** use abrasive sponges, strong household cleaners, scouring agents, organic solvents or acidic cleaners as they may cause surface deterioration, peeling or change of colour.